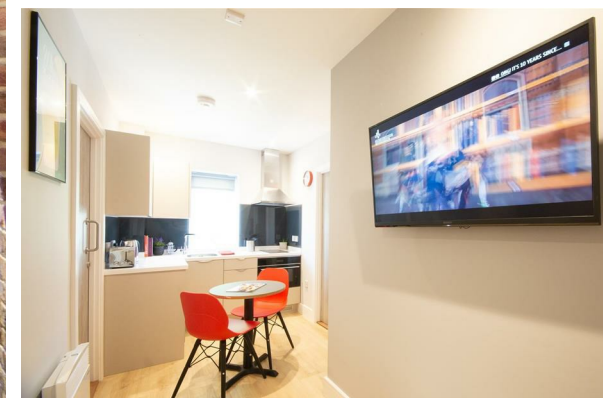


NEXA
PROPERTIES

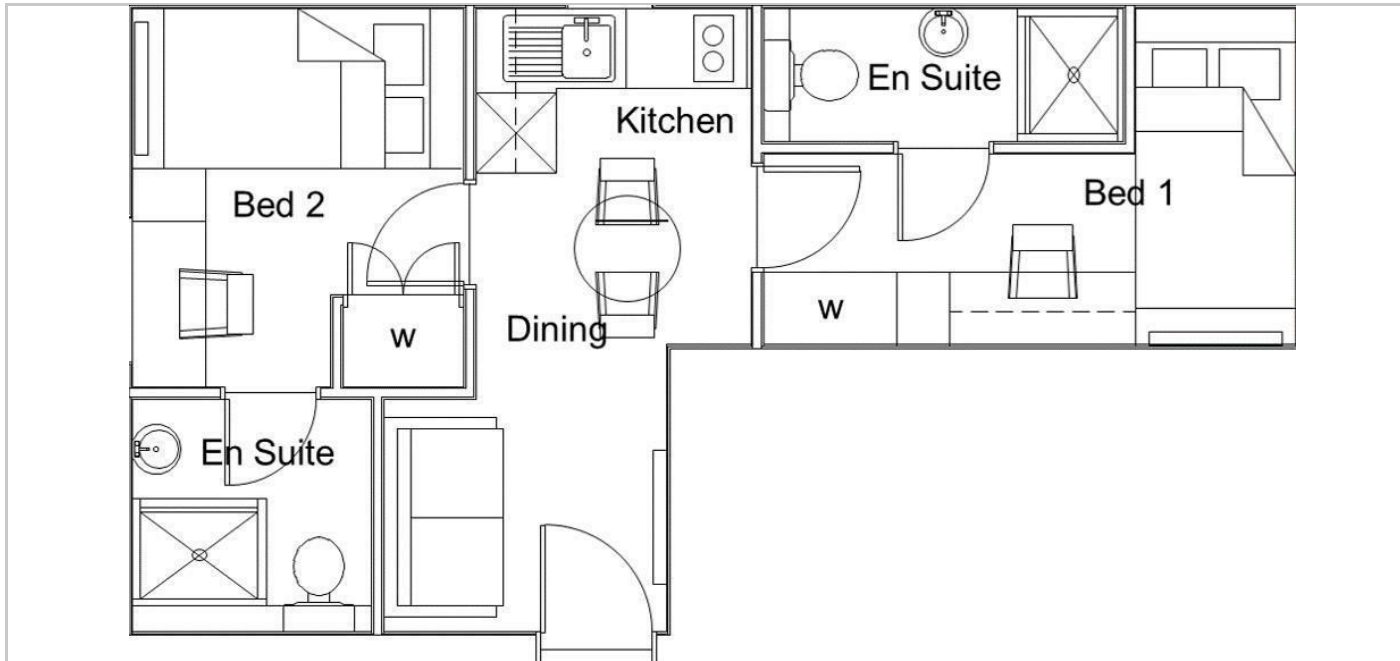
TO LET



Flat 8, Hampshire Court House Lansdowne Street, Southsea, Hampshire, PO5 4BA

£1,350 PCM

- 2 MINUTE WALK TO THE UNIVERSITY
- STUDENTS ONLY
- AVAILABLE FROM AUGUST 2025
- WIFI INCLUDED
- PRIVATE CYCLE STORE & COURTYARD
- BILLS INCLUDED
- EN-SUITE BEDROOMS



Directions

THE PROPERTY

****AVAILABLE AUGUST 2025** STUDENTS ONLY ****

NEXA properties are delighted to welcome to the market this boutique student development by G5 Student and situated right in the heart of Portsmouth's University district.

This modern 2 bedroom apartment, with two full en-suite bathrooms, beautifully designed interiors and furnishing throughout, modern kitchens, high speed internet, laundry facilities, communal student hub, private secured courtyard and seating, secured key fob entry system and all bills included.

Contact NEXA Properties to arrange viewing and secure your perfect student accommodation for August 2025.

SITUATION