



TO LET

1 Enterprise House, Isambard Brunel Road, Portsmouth, PO1 2RX  
£900 PCM

- ONE BEDROOM APARTMENT
- CENTRAL LOCATION
- EXCELLENT TRANSPORT LINKS
- MODERN THROUGHOUT
- WALKING DISTANCE TO TOWN CENTRE
- SELF CONTAINED UNIT
- FURNISHED
- BRAND NEWLY CONVERTED
- RIGHT ON THE DOORSTEP OF UNIVERSITY CAMPUS
- AVAILABLE FEBRUARY 2024

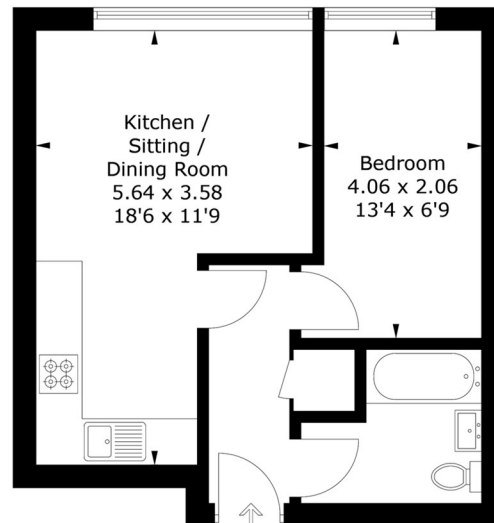
## THE PROPERTY

NEXA Properties are delighted to welcome to the market this very well presented one bedroom furnished apartment in the sought after location of central Portsmouth. The property is contemporary in design and offers an open plan kitchen/lounge, bathroom and double bedroom. The property also benefits from double glazing as well as electric heating. Perfect for a student or professional.

Contact NEXA to arrange your viewing.

### Isambard Brunel Road, Portsmouth, PO1

Approximate Gross Internal Area = 34.7 sq m / 373 sq ft



PRODUCED FOR NEXA PROPERTIES

Whilst every attempt has been made to ensure the accuracy of the floorplan, measurements of doors, windows and rooms are approximate. These plans are for representation purposes only as defined by RICS Code of Measuring Practice and used as such by any prospective purchaser. (ID648304)

## SITUATION

## Directions

15 Hampshire Terrace, Southsea, Portsmouth, Hants, PO1 2QF  
 Tel: 02392295046 Email: [hello@nexaproperties.com](mailto:hello@nexaproperties.com) <https://www.nexaproperties.com/>