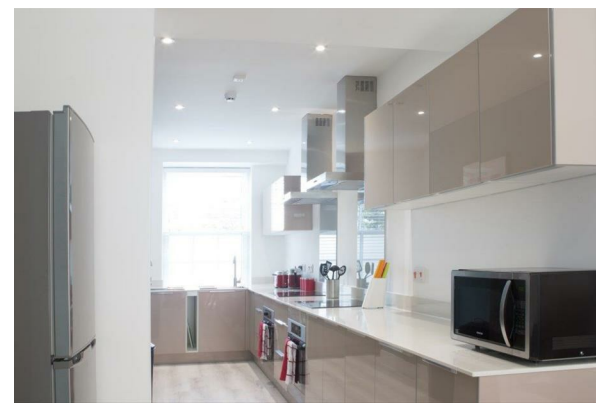




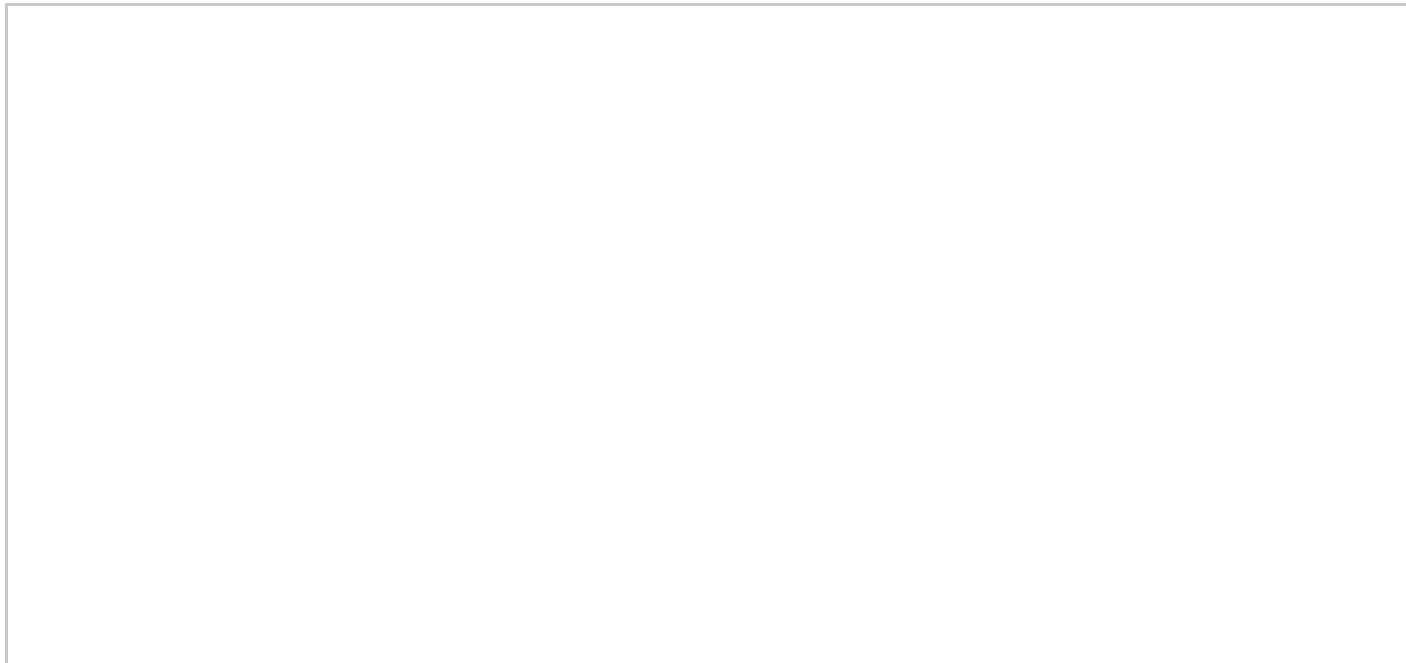
**TO LET**



Room 10, 16 Hampshire Terrace, Portsmouth, PO1 2QF

**£575 PCM**

- MODERN STUDENT HOUSE
- ALL BILLS INCLUDED
- WIFI INCLUDED
- AVAILABLE FOR SEPTEMBER 2021
- BIKE STORAGE
- LUXURY ROOM WITH SHOWER
- WALKING DISTANCE FROM THE UNIVERISTY



## Directions

## THE PROPERTY

NEXA properties are delighted to welcome to the market this beautifully designed modern student house. The room comes with its own shower and a shared toilet. It is situated right in the heart of Portsmouth's University district and has a large modern kitchen / dining area on the ground floor, including a flat screen TV and American Fridge Freezer and a small kitchen facility on the 2nd floor. The rooms are well sized, fully furnished with huge windows that allow for plenty of light.

The accommodation is all-inclusive; all bills are included in the rent, along with high-speed wifi! There is a commercial washing machine and dryer facility on the ground floor, along with a secured internal bike storage facility. The building is secured with CCTV at the entrance and the managing agent is based on the lower ground floor.

AVAILABLE SEPTEMBER 2021!! Contact Nexa to arrange a viewing.

## SITUATION