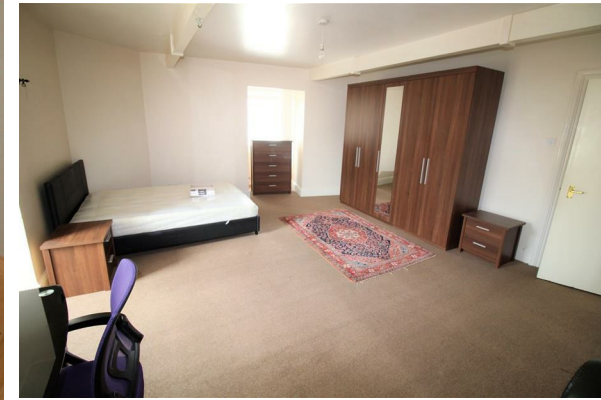




TO LET



Flat C, Grove Chambers, 95 Elm Grove, Southsea, PO5 1LH
£1,800 PCM

- STUNNING APARTMENT
- GAS CENTRAL HEATING
- AVAILABLE SEPTEMBER
- A MUST SEE PROPERTY
- HUGE DOUBLE BEDROOMS
- SECURE DOOR ENTRY SYSTEM
- CLOSE TO SHOPS
- CLOSE TO UNIVERSITY



Directions

THE PROPERTY

Nexa Properties are delighted to offer this stunning four bedroom apartment on Elm Grove, Southsea.

This property boasts four great size double bedrooms, a spacious open plan lounge and kitchen with appliances and a beautiful bathroom suite with shower over bath.

Other benefits include gas central heating, close to shops/supermarkets and is set within walking distance to the University.

Offered furnished and available start of September.

This is a must see property to appreciate what is on offer.

Contact Nexa on to arrange a viewing.

SITUATION