







**\*\*GUIDE PRICE £320,000\*\***

**\*\*GREAT INVESTMENT OPPORTUNITY\*\***

**\*\*FULLY LET UNTIL DECEMBER 2025\*\***

NEXA Properties are delighted to present this recently refurbished five bedroom, four bathroom HMO property for sale in Heidelberg Road, Southsea.

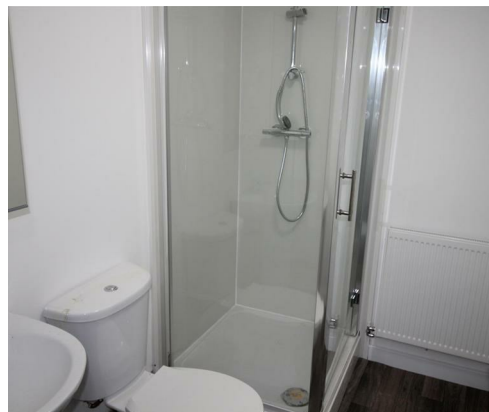
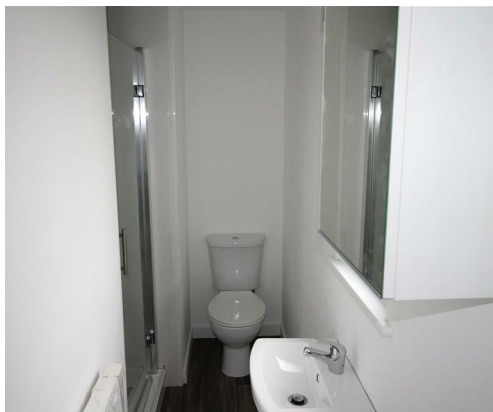
Offered with tenants in situ, the house is let until December 2025 with a monthly income of £2,860 - let with all bills included.

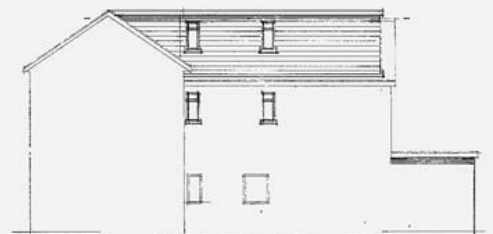
This house sits in a great student/professional location close to the University bus, railway and supermarkets, making it a great addition to an investment portfolio.

Full video available on request.

Contact NEXA to arrange a viewing.

- GUIDE PRICE £320,000
- £2,860 MONTHLY INCOME
- FIVE BEDROOM HMO
- LET UNTIL DECEMBER 2025
- FOUR BATHROOMS
- IDEAL INVESTMENT OPPORTUNITY
- POPULAR STUDENT/PROFESSIONAL LOCATION
- VIDEO AVAILABLE ON REQUEST

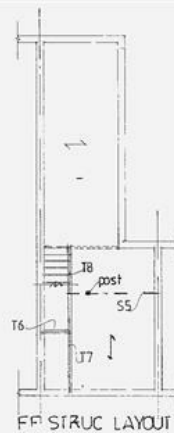




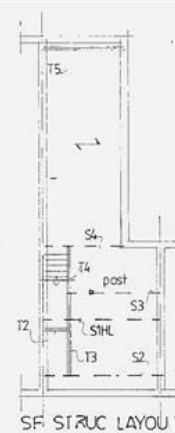
PROPOSED SIDE



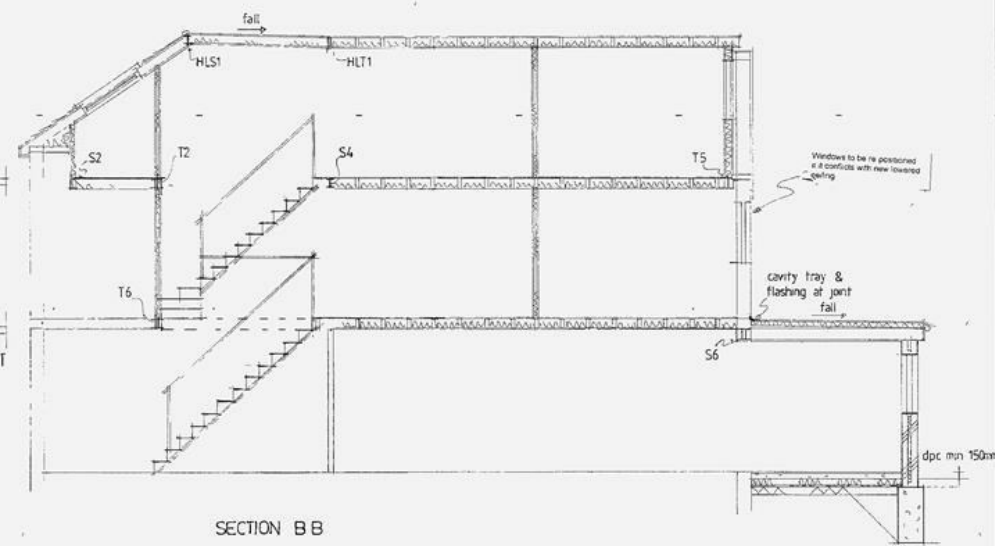
PROPOSED REAR



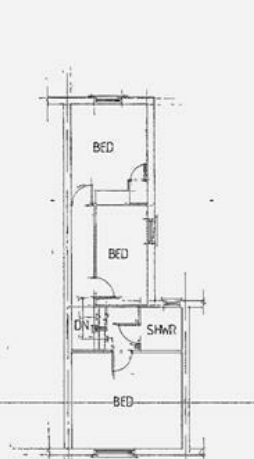
FF STRUC LAYOUT



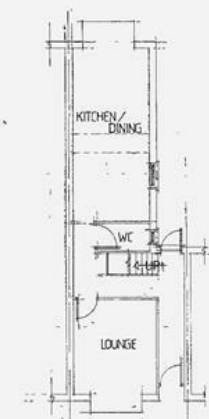
SF STRUC LAYOUT



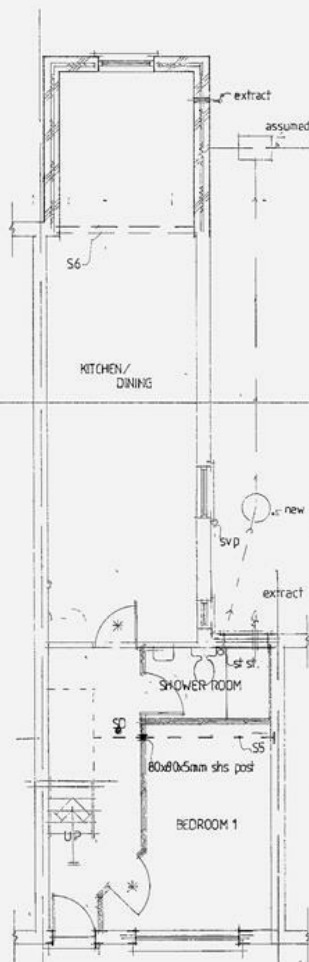
SECTION B B



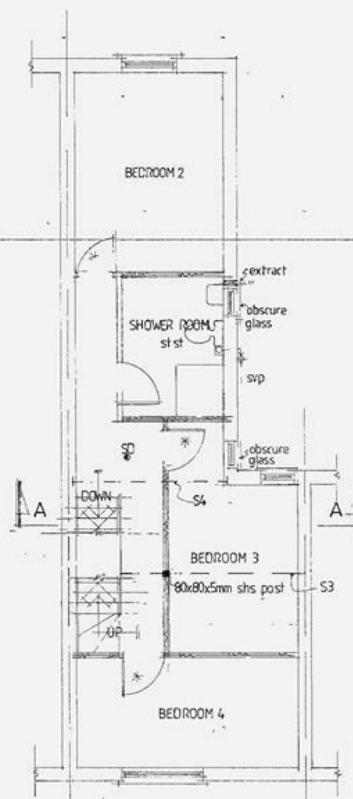
EXISTING FIRST FLOOR



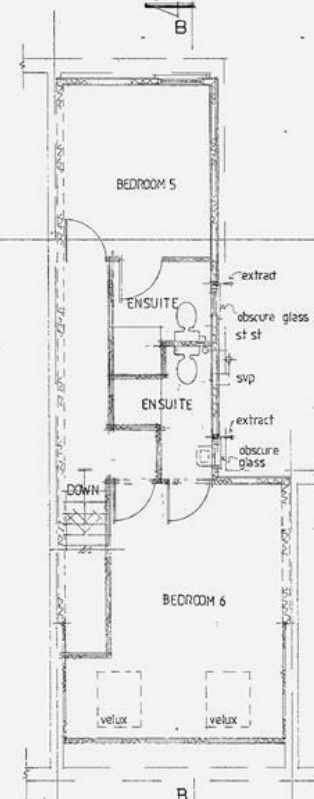
EXISTING GROUND FLOOR



PROPOSED GROUND FLOOR



PROPOSED FIRST FLOOR



PROPOSED SECOND FLOOR