



TO LET



70 Prince Albert Road, Southsea, PO4 9HS

£210,000

- 2 BEDROOMS
- LIVING ROOM
- BALCONY
- OFF ROAD PARKING
- WALKING DISTANCE TO BRANSBURY PARK
- NEWLY FITTED MODERN KITCHEN
- NEW BATHROOM SUITE, WC
- ENCLOSED COURTYARD
- CLOSE TO LOCAL SHOPS

THE PROPERTY

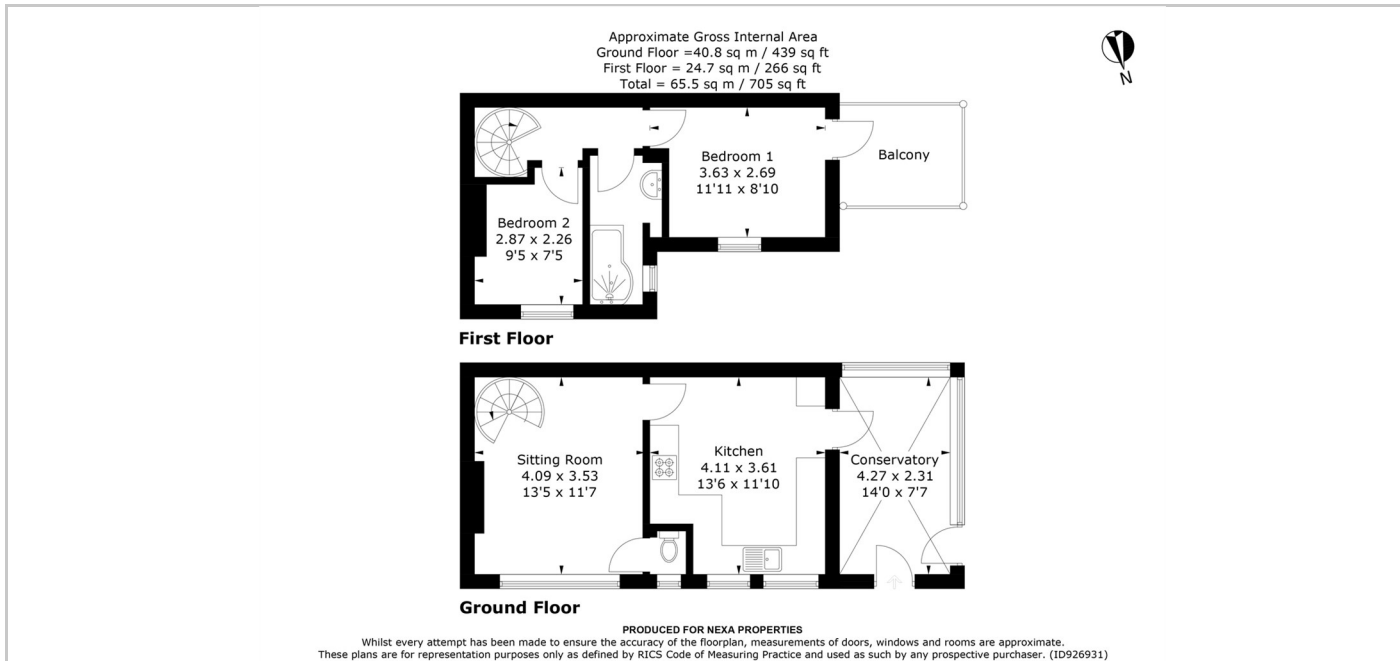
This two bedroom end of terrace house is set within a popular location close to Bransbury Park within easy access to local transport links and amenities.

The property offers good living space with the current owners having recently refurbished the kitchen, including installing new units and integral appliances. Further accommodation consists of living room with spiral staircase leading to the first floor, a conservatory and W/C.

To the first floor there are two bedrooms, 1 being a double and the bathroom has a new suite fitted which includes a jacuzzi bath. The main bedroom gives access to the balcony overlooking the courtyard garden which offers great entertaining space and benefits from double gates which could be used as off street parking.

Viewing is highly recommended to fully appreciate the accommodation and location on offer.

SITUATION



Directions