





****GUIDE PRICE - £380,000 - £400,000****

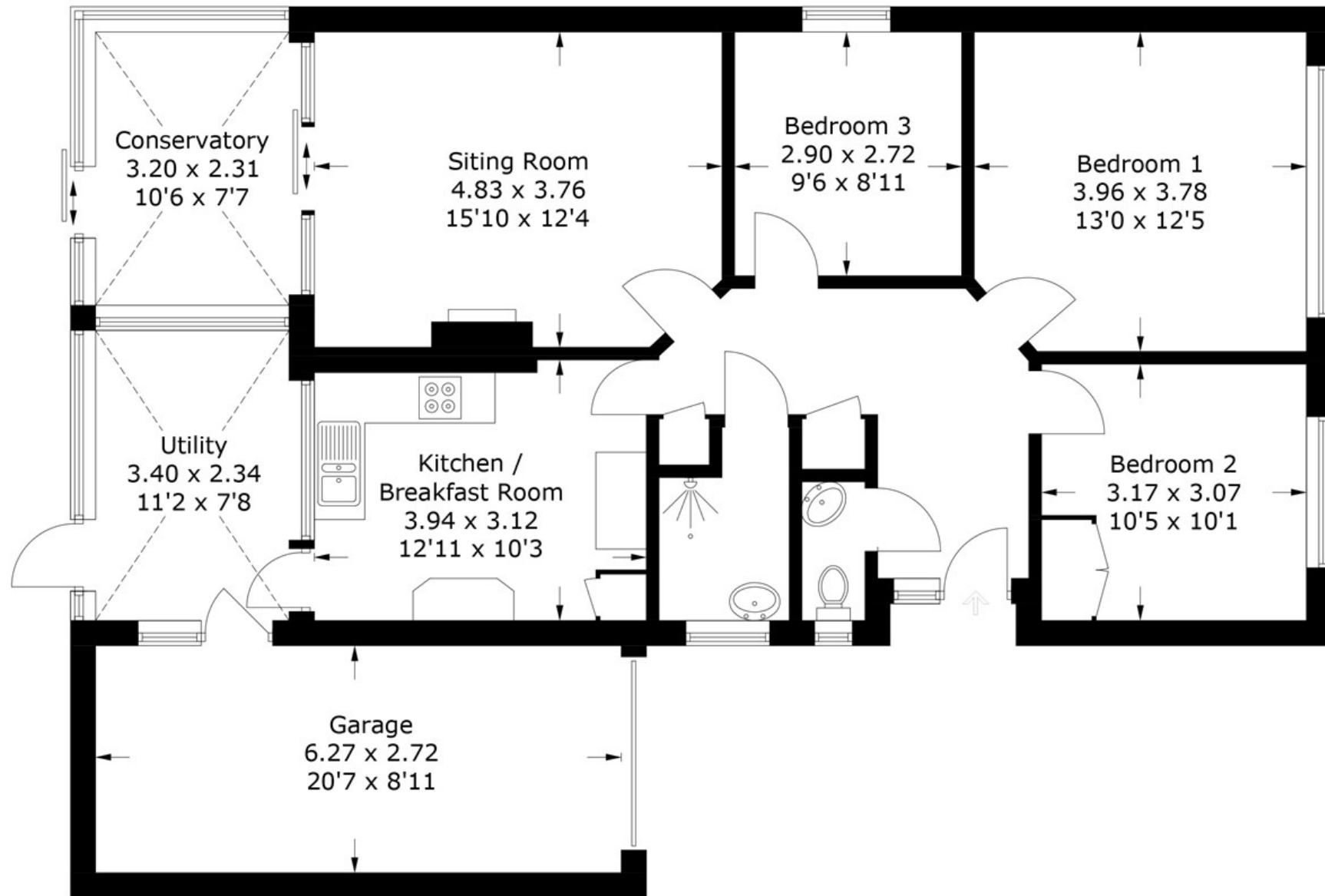
NEXA Properties are delighted to bring to this three bedroom detached bungalow situated on Frosthole Crescent, Fareham.

- GUIDE PRICE - £380,000 - £400,000
- SPACIOUS DETACHED BUNGALOW
- NO FORWARD CHAIN
- THREE BEDROOMS
- DRIVEWAY AND GARAGE
- DOUBLE GLAZING
- VIEWINGS HIGHLY RECOMMENDED
- SPACIOUS NORTH FACING GARDEN
- WET ROOM
- SOUGHT AFTER LOCATION



Frosthole Crescent, PO15 6AF

Approximate Gross Internal Area = 118.9 sq m / 1280 sq ft
(Including Garage)



Ground Floor

PRODUCED FOR NEXA PROPERTIES

Whilst every attempt has been made to ensure the accuracy of the floorplan, measurements of doors, windows and rooms are approximate. These plans are for representation purposes only as defined by RICS Code of Measuring Practice and used as such by any prospective purchaser. (ID935528)