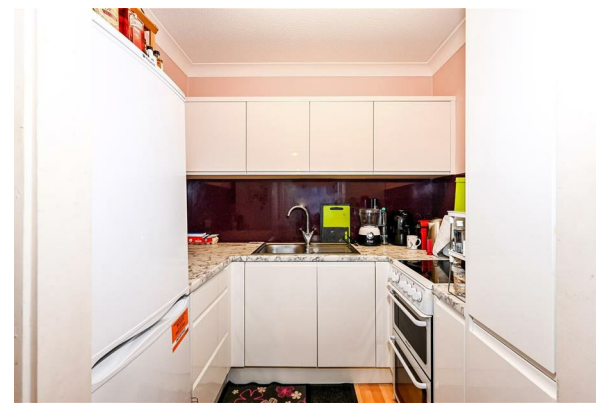




TO LET



11, Maple Court Staunton Avenue, Hayling Island, PO11 0EF
£160,000

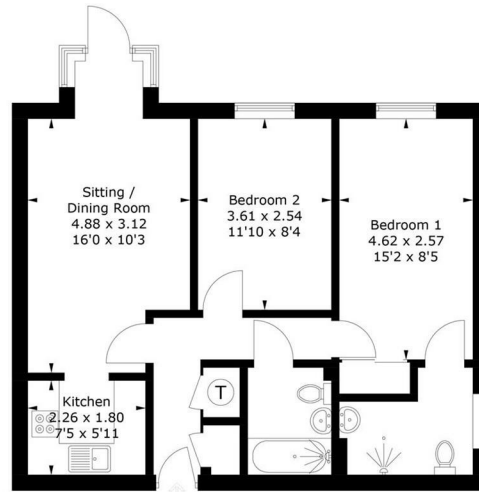
- ARGUABLY THE BEST APARTMENT IN THIS POPULAR RETIREMENT BLOCK
- GROUND FLOOR ASPECT
- AMPLE FIRST COME FIRST SERVE PARKING FOR RESIDENTS AND VISITORS
- FANTASTIC COMMUNITY FEEL AND EVENTS ORGANISED REGULARLY
- IN THE HEART OF WEST TOWN
- TWO BEDROOMS, TWO BATHROOMS
- DOORS ON TO THE COMMUNAL GARDENS
- RESIDENTS LOUNGE
- COMMUNAL LAUNDRY ROOMS
- OFFERED WITH NO FORWARD CHAIN

THE PROPERTY

ARGUABLY THE BEST APARTMENT IN THIS POPULAR RETIREMENT BLOCK ** TWO BEDROOMS, TWO BATHROOMS ** GROUND FLOOR ** AMPLE UNALLOCATED PARKING ** DOORS ON TO THE GARDENS **

11 Maple Court, Staunton Avenue, PO11 0EF

Approximate Gross Internal Area = 59.5 sq m / 640 sq ft



Ground Floor

PRODUCED FOR NEXA PROPERTIES

Whilst every attempt has been made to ensure the accuracy of the floorplan, measurements of doors, windows and rooms are approximate. These plans are for representation purposes only as defined by RICS Code of Measuring Practice and used as such by any prospective purchaser. (ID988738)

SITUATION

Directions