



6 Folkestone Road

, Portsmouth, PO3 6LR

Offers In The Region Of £290,000



3



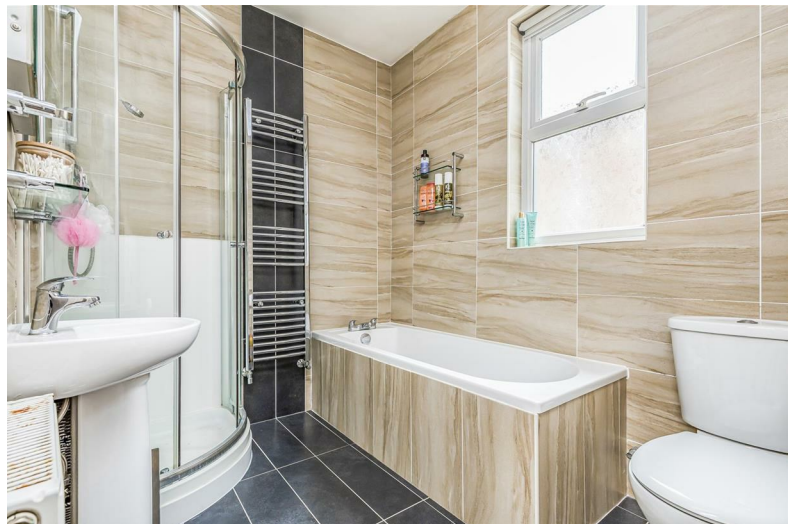
1



1



6 Folkestone Road



Description

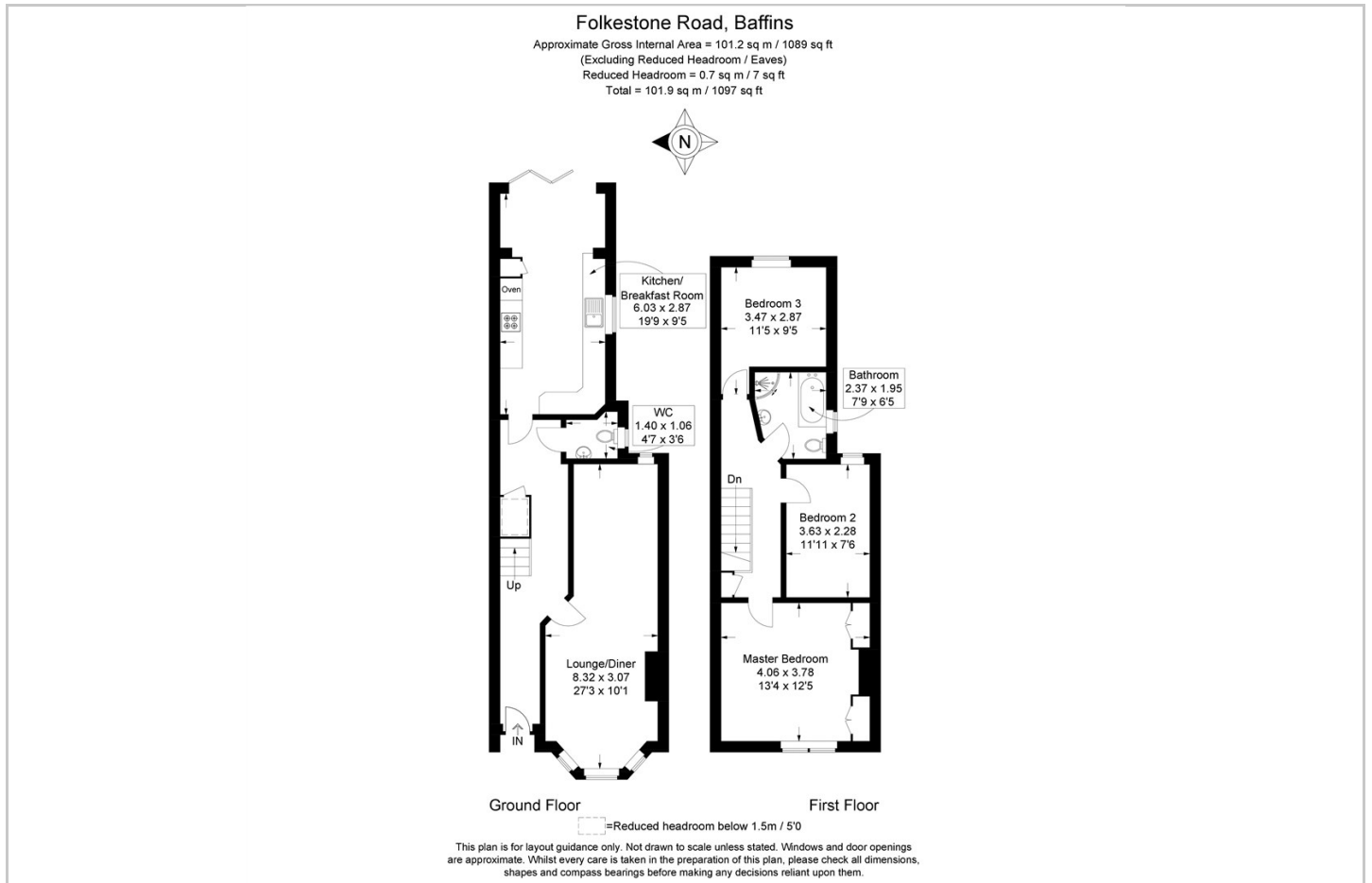
STUNNING THREE BEDROOM HOME IN BAFFINS ** HAS BEEN RENNOVATED THROUGHOUT ** HIGH-GLOSS KITCHEN WITH DINING AREA AND BI-FOLDING DOORS ON TO THE GARDEN ** NO FORWARD CHAIN ** VIEWINGS AVAILABLE ON SATURDAY 1ST APRIL (DUE TO TENANT AVAILABILITY)

- BAFFINS HOME
- BI-FOLDING DOORS ON TO THE GARDEN
- DOWNSTAIRS WC
- NO FORWARD CHAIN
- SOUGHT AFTER BAFFINS LOCATION
- STUNNING HIGH-GLOSS KITCHEN DINER
- MODERN FOUR-PIECE BATHROOM SUITE
- LANDSCAPED REAR GARDEN WITH ARTIFICIAL TURF
- COSY LOUNGE DINER
- POTENTIAL RENTAL INCOME OF £1,400PCM

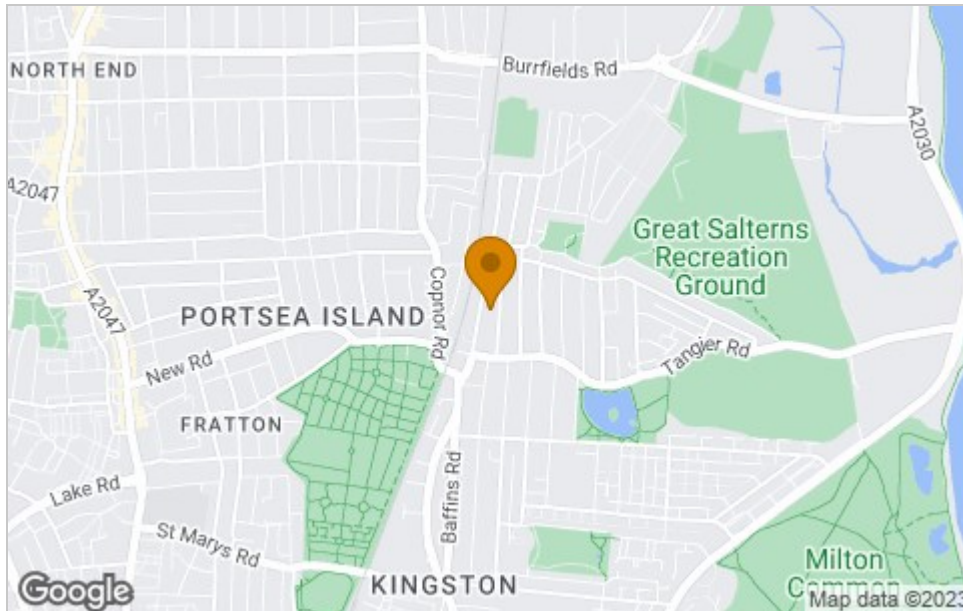




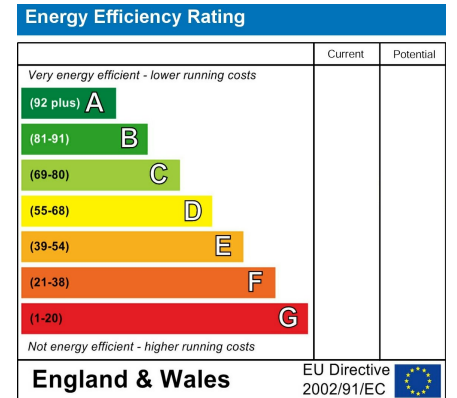
Floor Plan



Area Map



Energy Efficiency Graph



Viewing

Please contact our Nexa First Southern Region Office on 02392295046 if you wish to arrange a viewing appointment for this property or require further information.

These particulars, whilst believed to be accurate are set out as a general outline only for guidance and do not constitute any part of an offer or contract. Intending purchasers should not rely on them as statements of representation of fact, but must satisfy themselves by inspection or otherwise as to their accuracy. No person in this firm's employment has the authority to make or give any representation or warranty in respect of the property.